



Carthage Corner

Aug 15, 2004 Quarterly Newsletter

Contents:

A note from Dr. Hollis

Elanco Products

Important Industry Dates:

August 24th
CVS 14th Annual Swine Conference



A Note From Dr. Bill Hollis

Hang on and enjoy the ride! As the roller coaster heads back up the hill, it's time to sharpen the tools, and calibrate the monitors.

We have enjoyed the rewards of efficient production meeting demand opportunity. Now is an excellent time to evaluate your herds potential. In this article I've shared recent progress in the grow-finish barns of one of our clients.

As you evaluate the charts, please consider the opportunities at your farm to capture efficiency in daily gain, feed conversion, or health. We are excited, even a little surprised, at how well these pigs have continued to improve.

We welcome your questions and challenges. Please call if we can help you check out your best "bang for the buck".

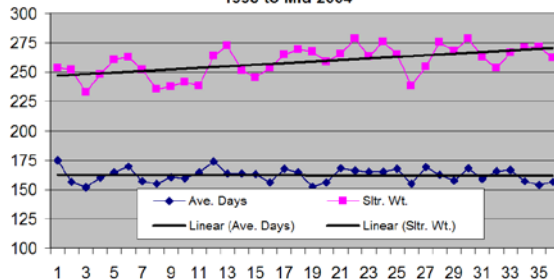
Warmest Regards,

William L. Hollis, DVM

Carthage Veterinary Service, Ltd.
PO Box 220
Carthage, IL 62321

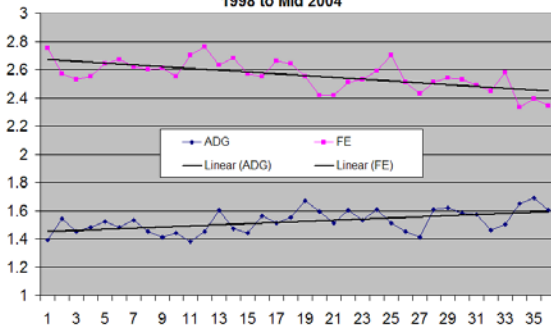
www.hogvet.com

Nursery and Grow Finish Production
(Batch pigs every 8 1/2 weeks)
1998 to Mid 2004



The progress chart in pounds! We've seen an impressive increase in slaughter weight with our fixed weaned pig delivery schedule. Seasonal variation in growth accounts for the "noise" on the slaughter weight. The farm has added nearly 25 lbs. per pig in total slaughter weight over the last five years. Genetics have remained relatively fixed, although true genetic progress is shown by this improvement.

Nursery and Grow Finish Production
(Batch pigs every 8 1/2 weeks)
1998 to Mid 2004

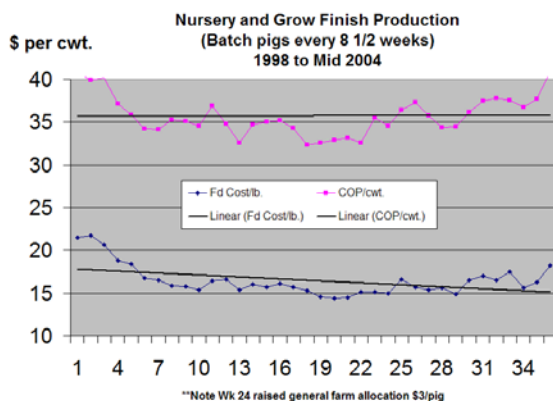


The real tests for efficiency. The herd now accepts the new targets of 1.7 ADG and 2.3 F.E. for combined nursery through finish performance. A slight increase in average wean age from 15 to 17 has made a big impact. Likewise, the improvements in health and prevention tools/medications have further raised the bar. Our next steps are further increasing wean age and maybe some building improvements. The best part is these are 25 year old barns!



Carthage Corner

Aug 15, 2004 Quarterly Newsletter



Where the rubber meets the road is in dollars. The farm has enjoyed a good downward trend in cost of feed per pound of gain. This measure of efficiency can vary greatly with input costs, but our general trend is a savings directly correlated to more pounds on less feed. The lower cost allowed the farm to add in \$3 per pig “farm allocation”, 10 groups back and still stay under our \$38/cwt. target COP.

New Targets

	Days	lbs gain	
ADG (w-f)	1.7	160	264
nursery	1	56	56
finisher	2	104	208
		lbs gain	lbs feed
FE (w-f)	2.3	264	607.2
nursery	1.4	56	78.4
finisher	2.5	208	528

Take home message: Where are you headed? More pounds for less cost. These are the new targets for the system as we see them. Please Comment! And enjoy the beautiful harvest ahead.

Ileitis linked to attrition

By preventing and controlling ileitis, producers can improve performance, thereby reducing variation, and more importantly, attrition—the term that refers to deads (mortality), culls (pigs not sold to the primary market) and lightweights (those sold below a packer’s full-value weight range).

Dr. John Deen, swine researcher at the University of Minnesota, says producers must go beyond the obvious to see attrition. “While average daily gain and feed efficiency are very important, they aren’t the whole picture. Quality control in pork production involves controlling variation, which is often caused by disease.”

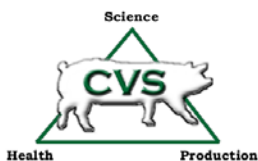
One disease contributing to variation in grow-finish pigs is ileitis—clinical and subclinical. Ileitis damages the gut and disrupts nutrient absorption, leading to reduced gains, decreased feed efficiency and increased variation.

The swine experts at Elanco Animal Health encourage prevention and control of all forms of the ileitis by using Tylan® Premix—the only feed medication FDA-approved for ileitis prevention and control. When used at 100g/ton for 21 days, Tylan prevents and controls ileitis to reduce variation in sick pigs, improving performance and reducing lightweights—all of which can reduce attrition and result in better economic return.

In an on-farm study of 1,008 pigs, feeding Tylan reduced mortality and culls 64.5% compared to control and reduced lightweights by 75%.

Carthage Veterinary Service, Ltd.
PO Box 220
Carthage, IL 62321

www.hogvet.com



Brought to you by Elanco Animal Health
and
Carthage Veterinary Service, Ltd.

